

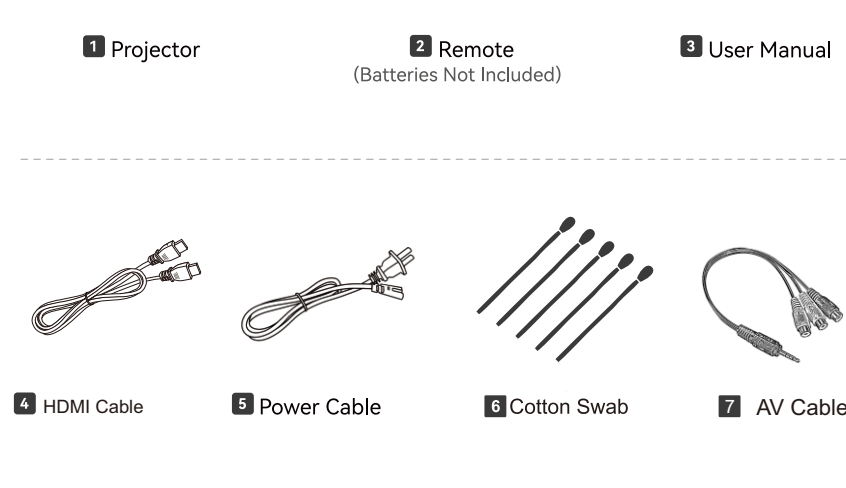


BEEM 490

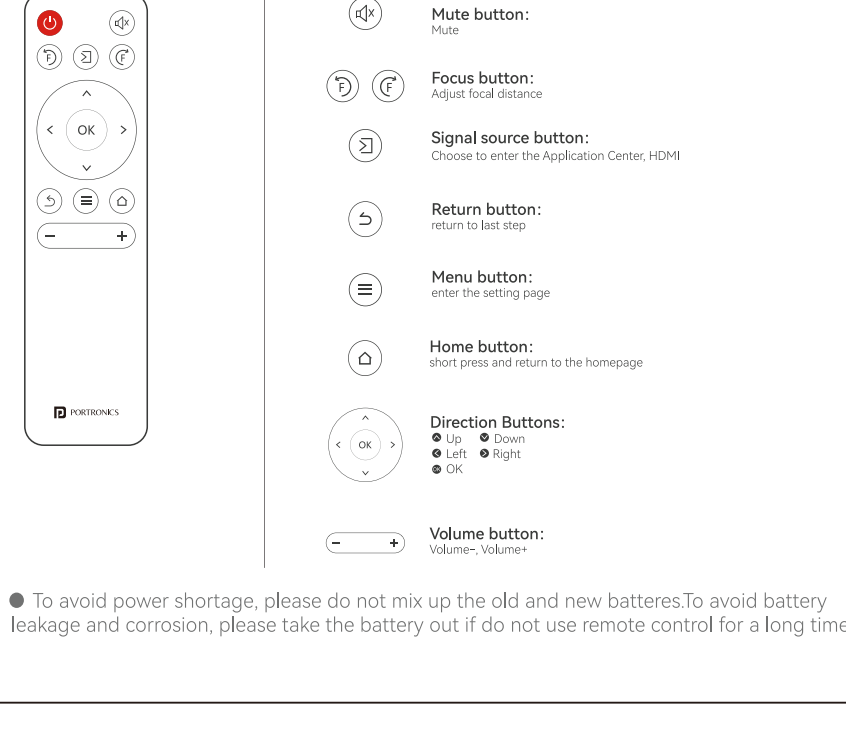
Smart LED Projector

USER MANUAL

PACKING LIST

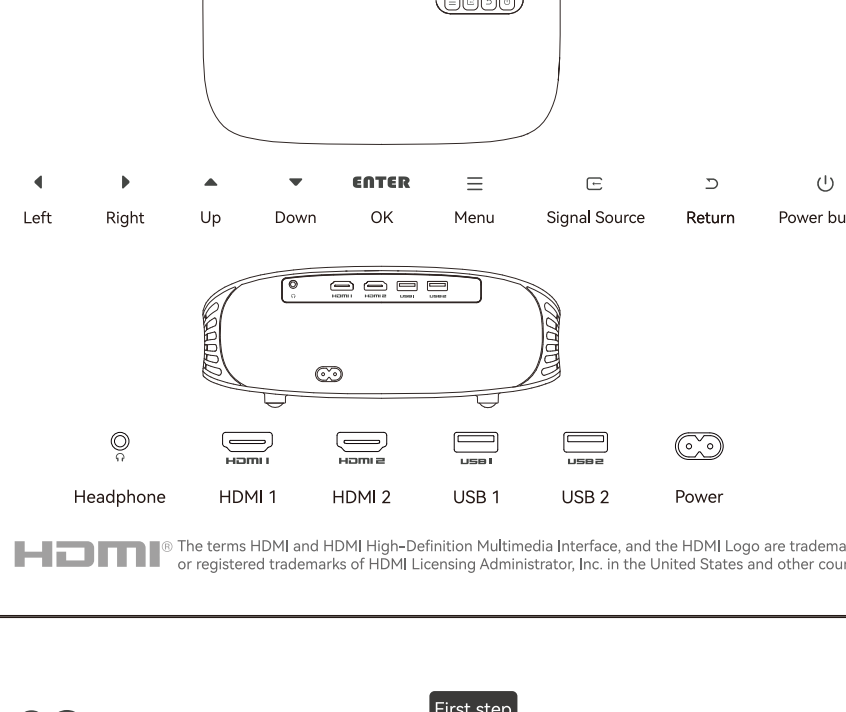


01/Remote control introduction



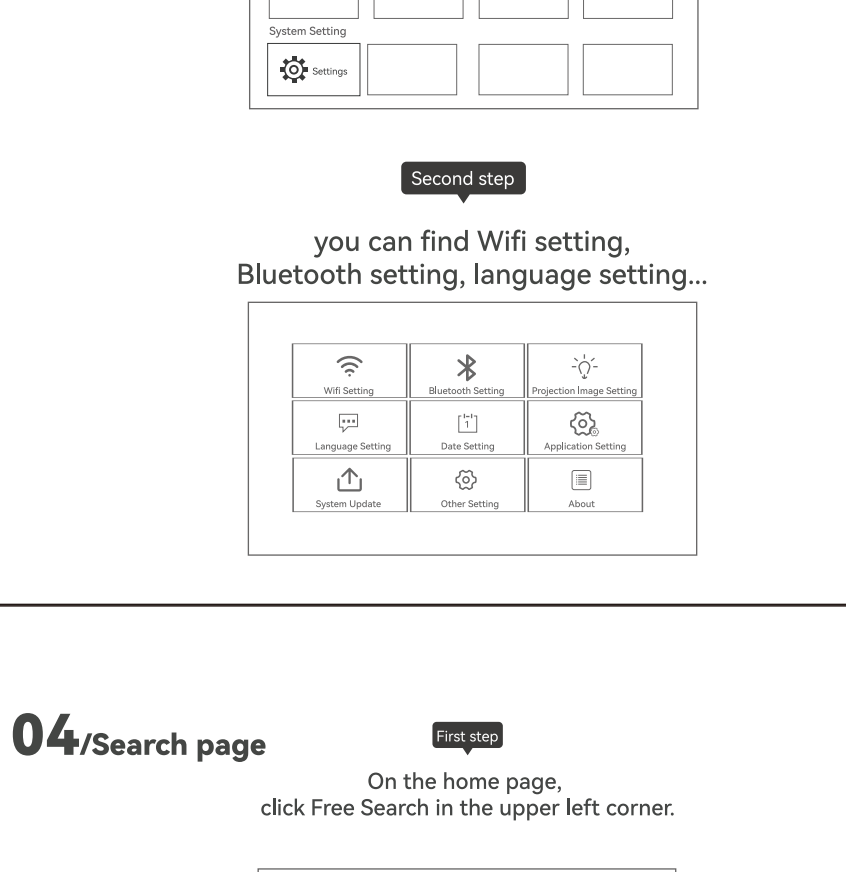
● To avoid power shortage, please do not mix up the old and new batteries. To avoid battery leakage and corrosion, please take the battery out if do not use remote control for a long time.

02/Host Appearance and Function Description

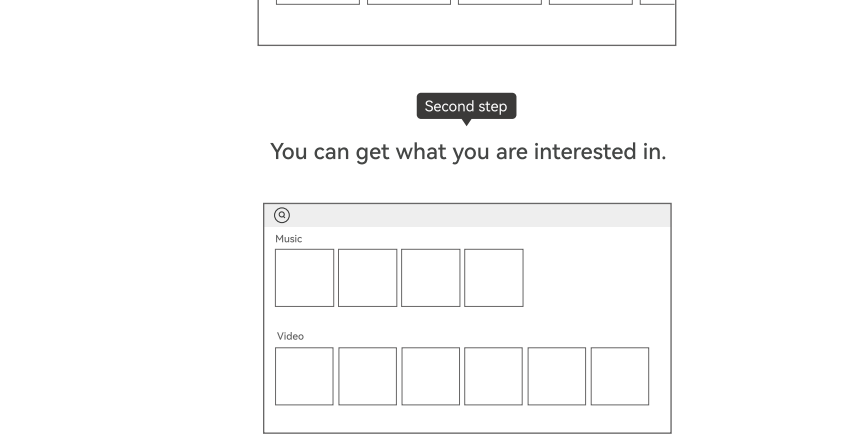


HDMI The terms HDMI and HDMI High-Definition Multimedia Interface, and the HDMI Logo are trademarks or registered trademarks of HDMI Licensing Administrator, Inc. in the United States and other countries.

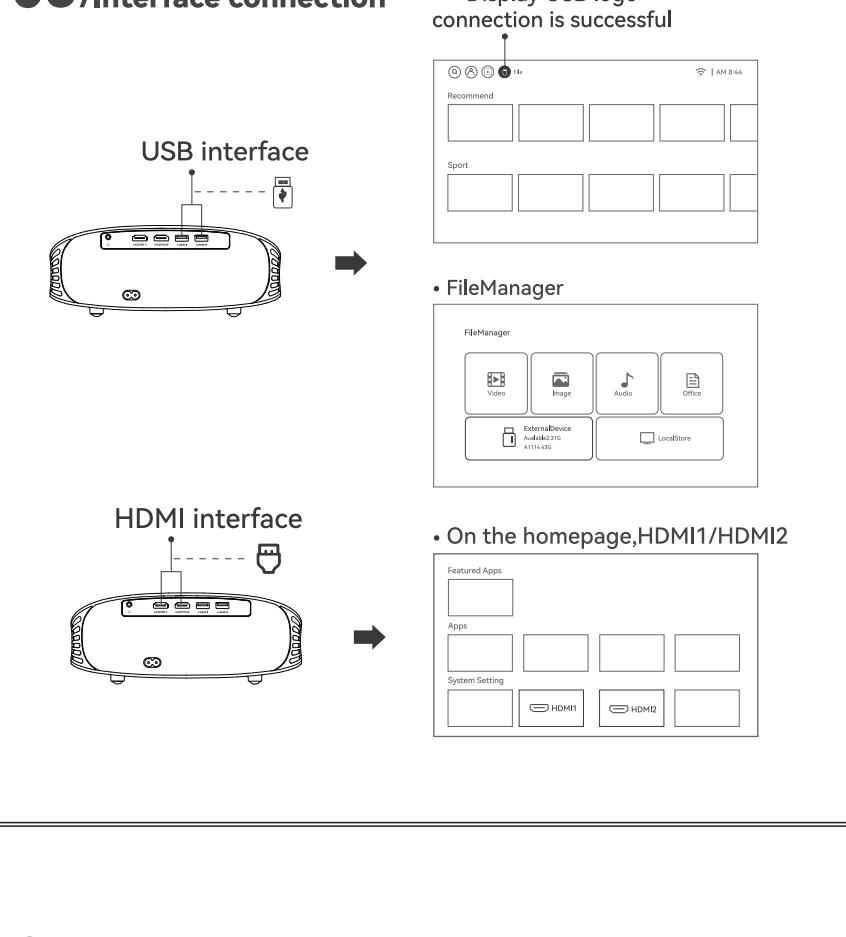
03/Setting



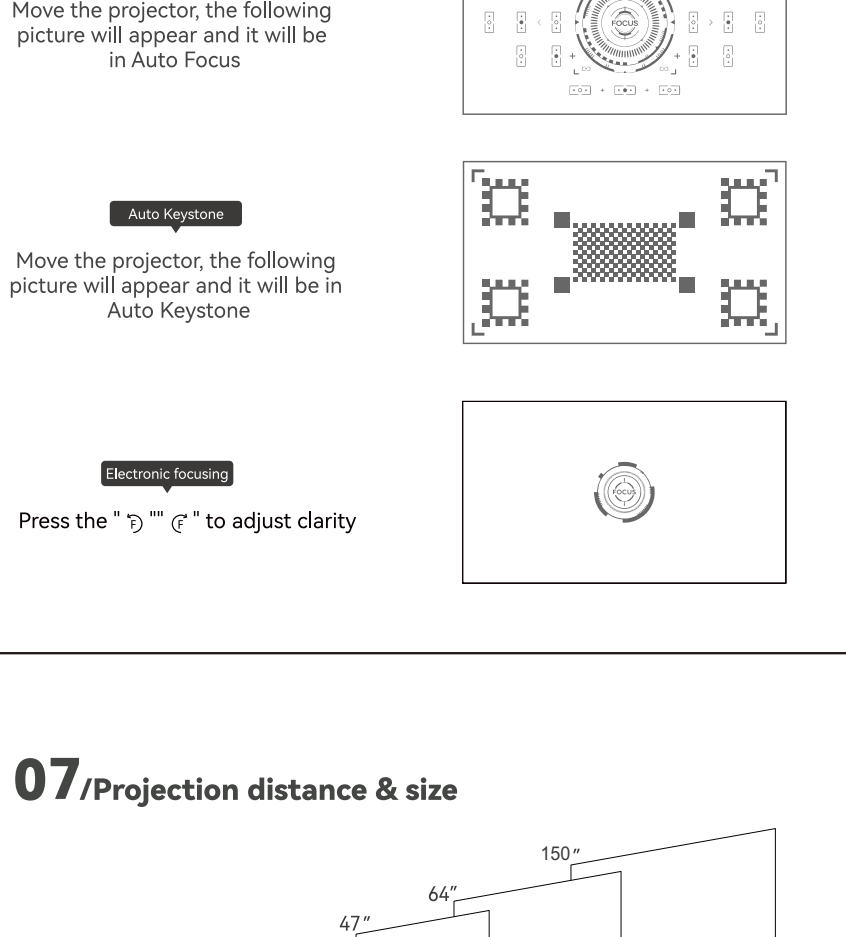
04/Search page



05/Interface connection



06/Auto Focus/Auto Keystone/Electronic focusing



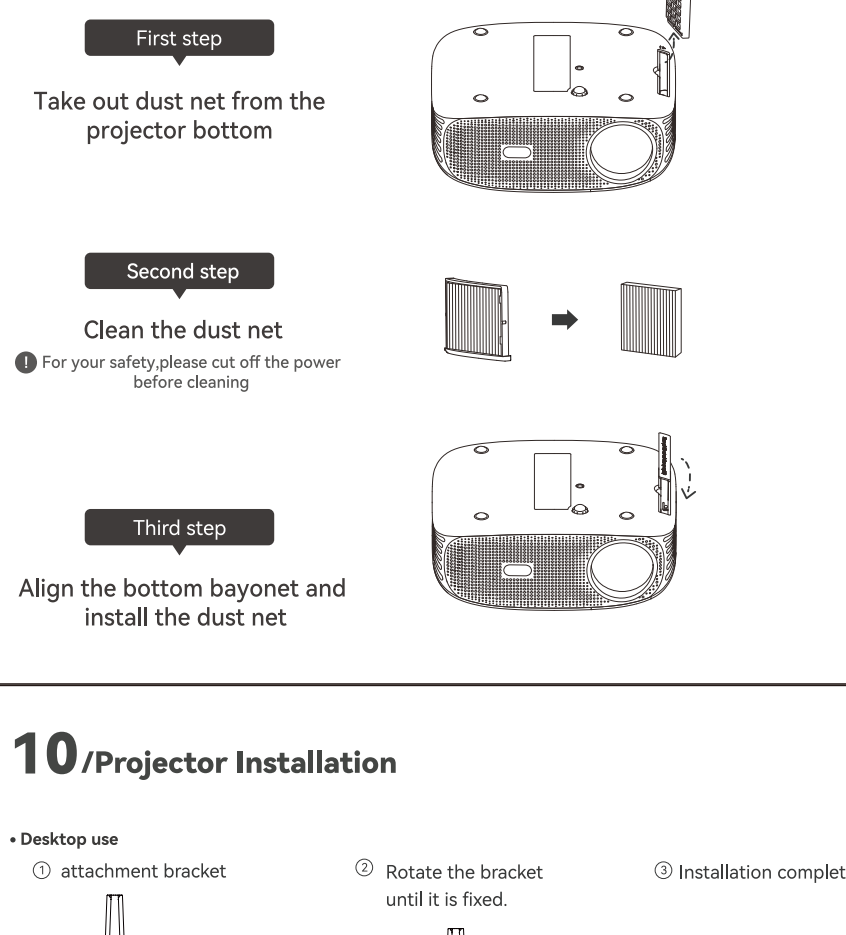
07/Projection distance & size



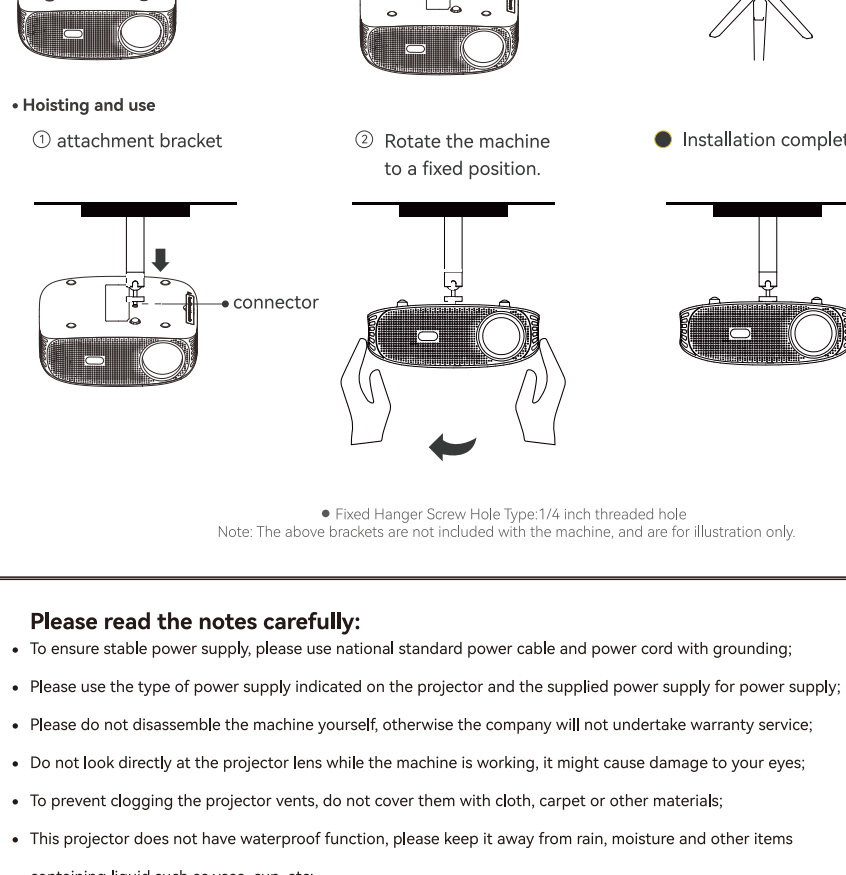
08/Technology Features

Imaging technology	TFT LCD	Power input	100V-240V-50/60HZ
Native resolution	1920 x 1080	Input	USB x 2/HDMI x 2/AV
Light source	LED	Output	Earphone
Focus mode	Automatic focus	Speaker	5W
Projection distance	1.2 - 4.5M	Unit size	245 x 192 x 94mm
Screen size	39-150 inches	Net Weight	1.5KG
Aspect ratio	16:9	Throw Ratio	1.35:1

09/Unload the Dust Net and Clear



10/Projector Installation



Please read the notes carefully:

- To ensure stable power supply, please use national standard power cable and power cord with grounding;
- Please use the type of power supply indicated on the projector and the supplied power supply for power supply;
- Please do not disassemble the machine yourself, otherwise the company will not undertake warranty service;
- Do not look directly at the projector lens while the machine is working, it might cause damage to your eyes;
- To prevent clogging the projector vents, do not cover them with cloth, carpet or other materials;
- This projector does not have waterproof function, please keep it away from rain, moisture and other items containing liquid such as vase, cup, etc;
- To prevent electric shock, please keep the projector away from rain, water or moisture;
- Cut off the power supply if do not use this projector for a long time;
- Use the original foam or other anti-shock material to protect projector if you need transport this projector;
- If you find the projector has problems, please contact with the supplier, do not repair by yourself;
- To extend the projector life span and protect your eyesight, we suggest you may have a break after 3-4 hours using.

Note: Any damage caused by physical impact, water/liquid, fire, etc. caused by the customer or nature shall not be covered under warranty.
Only product design, feature and functionality-related faults can be considered. As per the brand's discretion, the product is eligible for repair and not for replacement, during the warranty period.