



CRANK UP
THE DECIBELS



DECIBEL 23
16W Wireless Stereo Soundbar

User Manual

1 WHAT'S INSIDE

Package Contents:
1. Bluetooth Speaker
2. Charging Cable
3. User Manual



Decibel 23 Speaker



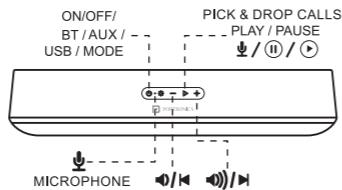
Type C Cable



User Manual

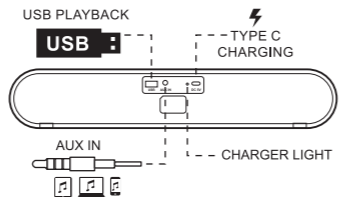
2 INTRODUCTION

Top

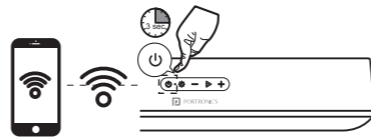


A. Short press "+" or "-" for VOL+ and VOL-
B. Long press to choose the previous or next song

Back



3 HOW TO CONNECT: BLUETOOTH



Step1- Hold the Button for 3 Seconds to Power On / Off
Step2- Choose **Bluetooth mode**
Step3- Open **Bluetooth** setting on your mobile device and select "Decibel 23"
Step4- While Pairing is successful, you can play music

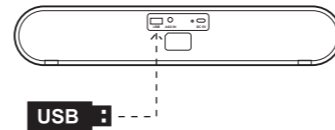
4 MICROPHONE



Button functions in Bluetooth mode

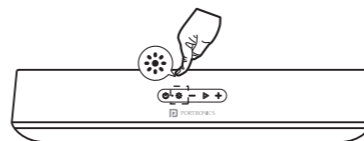
Status
Incoming call Press to answer an incoming call.
During a call Press to end the current call.

5 HOW TO CONNECT: USB FLASH DRIVE



Disclaimer: Upon removal of USB flash drive the speaker switches to bluetooth mode.

5 LIGHT EFFECT



Press to select your preferred light effect: rock, flow, cross, ripple, flash, or off.

6 LED INDICATION

Status	LED indication
Fully charged	OFF
Charging	Red light up
Pairing mode	Blue Blinking
Working mode	Blue light up

7 SPECIFICATION

- Power Input : DC 5V, 1A
- Output Power : 16W (RMS)
- BT Version : 5.3
- Supports : A2DP and AVRCP
- Freq. Response : 70 15k Hz
- S/N Ratio : 90dB
- Battery Capacity : 2000mAh
- Playback Time : 4-5 hours (with 60-70% Volume)
- Dimension : 381 x 68 x 75 mm

NOTE: Any damage caused by physical impact, water/liquid, fire, etc, caused by the customer or nature shall not be covered under warranty. Only product design, features and functionality related faults will be considered. Never dismantle the product without due permission, otherwise it may nullify the warranty clause.



www.portronics.com

For Support

Visit : www.portronics.com

E-mail : help@portronics.com

Contact No.: +91 9555245245, 011-42413131

(Working Hrs.: Monday - Saturday 10:00am - 6:00pm)



E-Waste Management
E: info@3recycler.com

For E-Waste & ROHS compliance
refer to www.portronics.com/ewaste