

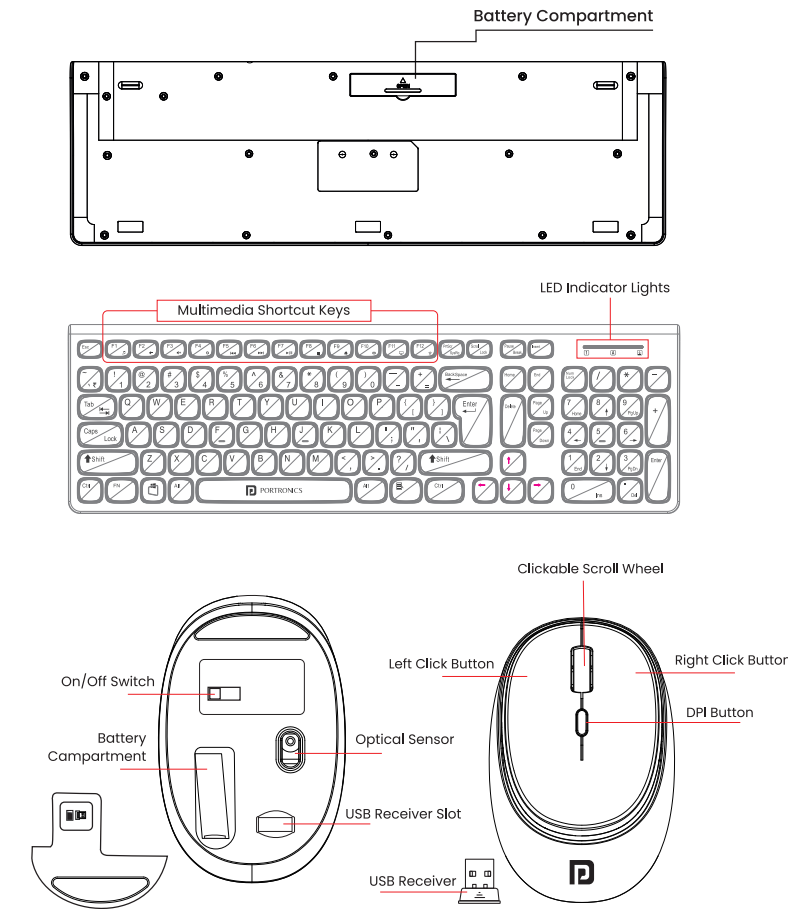
# Key7 Combo

Wireless Keyboard and Mouse



User Manual

## Layout Overview



## Package Contents

- 1 x Wireless Keyboard
- 1 x Wireless Mouse
- 1 x USB Receiver (inside mouse battery compartment)
- 1 x User Documentation

## Powering On/Off

- The wireless keyboard requires a AAA battery and the wireless mouse requires a AA battery for power (batteries not included).
- To power on the mouse, slide the On/Off Switch to the On position. To power off the mouse, simply slide the switch to the off position.
- The keyboard turns on automatically and does not require an On/Off switch.

## Connecting To Your PC

- Turn on the mouse. The keyboard turns on automatically.
- Insert the USB Receiver (inside the mouse battery compartment) into your device such as your laptop or desktop PC.
- You can now use the keyboard-mouse combo.

## Auto Sleep Mode

After 10 minutes of inactivity, the keyboard and mouse will enter sleep mode. Press any key or button to wake them up.

## Adjusting Mouse DPI Settings

- The wireless mouse is equipped with an adjustable DPI feature, allowing you to customize the cursor sensitivity for different tasks.
- Press the DPI button to cycle through the available DPI levels.
- Choose the DPI level that corresponds to your preferred sensitivity.
- Test the new DPI setting by moving the mouse on the surface. Adjust until you find a sensitivity that feels comfortable for your tasks.

## Do's and Don'ts

- The battery life is influenced by battery brand, usage patterns, and environmental factors. We recommend using high-quality batteries from reputable brands.
- Ensure the device remains dry and is shielded from rain, humidity, liquids, and condensation.
- Store the equipment within moderate temperature ranges; avoid high or low extremes.
- Do not use the device with wet hands.
- Do not use or store the device in dusty or dirty areas.
- Do not drop, knock or shake the device.

**Note:** Any damage caused by physical impact, water / liquid, fire, etc. caused by the customer or nature shall not be covered under warranty. Only product design, feature and functionality-related faults can be considered. During the warranty period, this product is only eligible for replacement and not eligible for repair, as per the brand's discretion.

## Technical Specifications (Wireless Mouse)

Wireless Technology	: 2.4 GHz USB Receiver
Wireless Range	: 10 meters
Special Features	: Adjustable DPI Button, Automatic Power Saving
Adjustable DPI	: 1000 - 1200 (Default) - 1600
Power Source	: 1 x AA Battery (not included)
Compatible Operating Systems	: Windows 8.1 & Above, macOS X 10.4 & Above
Click Life	: 5 Million Clicks
Weight	: 55 grams
Dimensions (mm)	: 100 x 63 x 34

## Technical Specifications (Wireless Keyboard)

Wireless Technology	: 2.4 GHz USB Receiver
Wireless Range	: 10 meters
Special Features	: Function Shortcut Keys, Automatic power Saving
Power Source	: 1x AAA Battery (not included)
Compatible Operating Systems	: Windows 8.1 & Above, macOS X 10.4 & Above
Key Life	: 10 Million Keystrokes
Weight	: 465 grams
Dimensions (mm)	: 417 x 129 x 30