

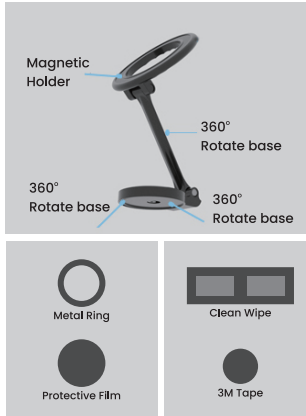
MOGUN 3

PREMIUM 360° ROTATION MAGNETIC MOBILE HOLDER

USER MANUAL



Product Mix



Installation Instructions

Confirm the location before installation, as it is suitable for flat, smooth, and non-porous surfaces.

Clean the Dashboard

Wipe with a damp cloth ①, follow up with a dry cloth ②)



Stick the Phone Holder to the Dashboard

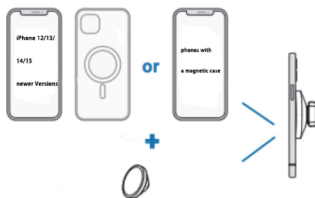
(Once dry, stick the bottom 3M Pad of Mogun 3 to the dashboard)



There are 2 scenarios for this magnetic phone mount

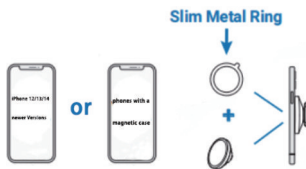
No metal ring is needed:

- For iPhone 12/13/14/15 or newer versions without a case.
- For all phones with a magnetic case.



Metal ring is needed:

- For phones without Magsafe or a magnetic case but with a phone case.
- For all phones without any case.



Tips:

- When attaching the metal ring to the phone case, ensure it is affixed to the outside of the case. Opt for a flat phone case.
- Allow a 10-minute wait after pasting the metal ring for optimal adhesion.
- iPhone 12 and above models can be directly attached.
- After attaching, let it set for 12-14 hours for better viscosity.