



TOAD 7

4-In-1 Wireless Optical Mouse

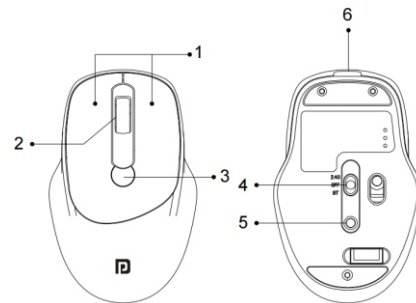


User Manual

I. In the box

- 1 x Toad 7
- 1 x Type-C Charging Cable
- 1 x USB Receiver
- 1 x User Manual

II. On-board Controls



- 1 - Left and Right Buttons
- 2 - Scroll Wheel
- 3 - DPI Buttons
- 4 - Power On-Off and Bluetooth switch
- 5 - Bluetooth Pairing Switch
- 6 - Type-C Charging Port

III. Switch Operation Modes



IV. Charging

- Plug the Mouse into a USB port using Type-C charging cable provided
- While charging, the LED turns green. Once completely charged, it turns off.
- Allow up to 1.5 hours to completely charge the mouse

Please note: Use only USB to Type-C cable for charging.

V. Modes

You can use Mouse in the following various ways

I. Bluetooth

II. USB Receiver

I. Bluetooth

Pairing with Tablets, Smartphones, Laptop and other Bluetooth-enabled devices

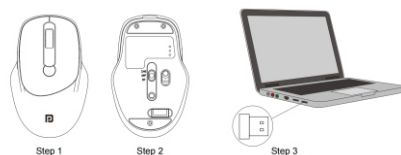
Step 1: When the Mouse is powered on, the Red light on back side will illuminate for 2 seconds and then turn off to save power, Here in this case, please note that the Mouse is still on

Step 2: Press and hold Bluetooth Pairing switch for 2 seconds. The mouse will go to the Pairing mode.

Step 3: Go to your "Settings" screen on your tablet, laptop, smartphone or other Bluetooth-enabled devices and go to the Bluetooth Setting menu, activate its Bluetooth function, find the device list and select

Step 4: Once successfully connected, blue indicator on the back side will be switched on and you're good to go

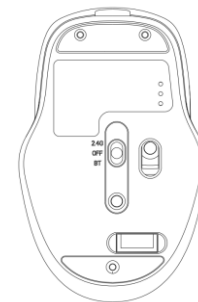
II. USB Receiver



- Step 1: Switch on the Mouse
- Step 2: Open the Mouse case and take out the USB receiver

- Step 3: Plug the USB Receiver into a USB port of your PC/Laptop. And, you're good to go!

You can use the Mouse connected with 2 different devices with both modes at the same time.



On pressing - Bluetooth mode is activated and is connected with device where Bluetooth connection is established. While pressing again - USB mode is activated is connected with other device where USB receiver is plugged in

VI. Care and Maintenance

1. Switch off the mouse before cleaning it.
2. Use soft, damp cloth to clean the surface
3. Do not use any chemicals, solvents, or cleaning solutions containing alcohol, ammonia or abrasives.
4. Do not allow any liquid to enter into any of the openings.

VII. Product Specifications

Technology	Wireless Optical Technology + Bluetooth
Buttons	4 Buttons with Scroll Wheel
Power Source	500 mAh Battery - Lithium Rechargeable
Charging Time	Up to 3.5 Hours
Wireless Effective Range	Up to 10 Meters
Charging Type	Type-C for Fast Charging
Battery Backup Time	1 Time Charge / 1 Week Backup
Resolution	1200 (default) - 1600 - 2400 - 3200 DPI USE/Bluetooth
Switch Life	3 Million Life Cycles
System Requirements	SSU ; Windows Mac Linux IN Chrome OS Android 11 and above > Interface: USB Port
Dimensions	10.8(H) x 6.8(W) x 3.8(L) cm
Weight	71 gm

NOTE: Any damage caused by physical impact, Water/liquid, fire etc caused by customer or nature shall not be covered under warranty. Only product design feature and functionality related faults will be considered. This mouse will come under non-repairable category



E-Waste Management
E: info@3rrecycler.com
For E-Waste & ROHS compliance refer to www.portronics.com/ewaste

www.portronics.com

For Support

Visit : www.portronics.com

E-mail : help@portronics.com

Contact No. : +91 9555245245

(Working Hours: Monday - Saturday, 10:00am - 6:00pm)