

# FREEDOM 4A

Desktop Wireless Charger with Digital Alarm Clock

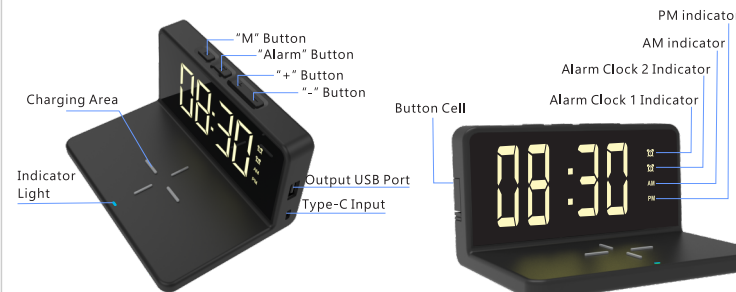


## User Manual

Thanks for choosing us.

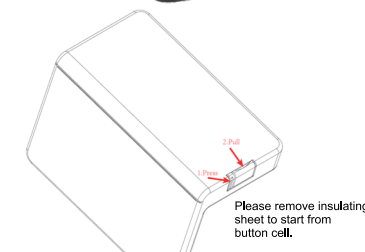
Please read the product parameter list carefully below. The amazing user experience will make you love it.

### 1. Product overview



**SPECIFICATIONS**

Input (Type-C)	: 5V/2A, 9V/1.67A
Wireless Output	: 5W/7.5W/10W(Max)
USB Output	: 5V 1A ± 5% ~ 5V 2A ± 5% (Max)
Charging Efficiency	: 73%
Transmission Distance	: 8mm
Display Brightness	: 3 Level
Time System	: 12/24 Hrs.
Size	: 14 X 9.5 X 7.5 Cm
Weight	: 150g



### 2. How to use

#### Power supply steps

1. Plug the charging cable USB-A male into the power adapter (the power adapter needs to be plugged into the mains socket), and insert the Type-C port into the product.

2. when the product is power on and in stand by mode, the clock is working, so you may also call it's "normal working condition" now, but there is no indicator light. Only when it's in charging, the light keeps on.

#### Step of Using Wireless Charger :

1. At the time of power-on, the wireless charging light shows the state: flashes twice; Standby state : The light is off.
2. The mobile phone should placed on the induction area, and the charging state is: indicator light is on; the full state is no light (applicable to Android mobile phone).
3. FOD status : Indicator light keeps flashing.

#### Time Mode Setting :

Double-click the "M" button to switch between the 12-hour and 24-hour system; the 12-hour system has AM and PM display

#### Alarm Clock & Time Setting :

1. Press and hold the "M" button to set alarm clock 1 and alarm 2 respectively.
2. Press and hold the "M" button for 2 seconds to set the alarm 1, when the time on the display screen start flashing, press the +/- button to set the minute of the alarm clock 1, then short press "M" button to switch to set the hour of the alarm clock 1. If no further operation within 5 seconds, the settings will be saved. You could also short press the alarm button to save the settings.
3. Press and hold the "M" button for 2 seconds twice to set the alarm clock 2, when the time on the display screen start flashing, press the +/- button to set the minute of the alarm clock 2, then short press "M" button to switch to set the hour of the alarm clock 2. If no further operation within 5 seconds, the settings will be saved. You could also short press the alarm button to save the settings.

4. Press and hold the "M" button for 2 seconds thrice to set the time of the clock. Press the +/- button to set the minute of the clock, then short press "M" button to switch to set the hour of the clock. If no further operation within 5 seconds, the settings will be saved.

#### Turn on/off the Alarm Clock :

1. Press and hold the ALARM button to turn on the alarm 1, long press the ALAM button to turn off the alarm 1.
2. Press and hold the ALARM button twice to turn on the alarm 2, long press the ALAM button to turn off the alarm 2.
3. When the alarm clock rings, pressing any button can turn it off.
4. Ring mode: The alarm clock rings for 30 seconds, then stop for 10 seconds, repeat this circulations for 3 times.
5. When the alarm clock rings, tap the product to enter a snooze mode, it will ring again after 5 minutes for 3 times. ( Any tap during the snooze mode will turn off the snooze mode, and the alarm clock indicator light stop flashing and it will not ring again.) It has only one snooze mode chance for each alarm. When it's in the snooze mode, the alarm clock indicator flashes, and by pressing any button could exit snooze mode.

#### Display Screen Brightness Setting :

1. The light brightness of the display screen has 4 levels: Strong / Medium / Weak / Off. It changes periodically: AM7:00-PM7:00---Strong; PM7:00-AM0:00---Medium; AM0:00-AM6:00---Weak
2. You could also adjust the brightness by short pressing the "+/-" button.

#### Time Memory :

1. Please remove the insulating sheet from the button cell before using the product to have the time memory function start working.
2. The button cell battery is for memorizing the time of the clock only, when the product is out of power supply suddenly.
3. To keep all functions working please keep the product power on.
4. When the button cell is running out of battery, to ensure time memorizing function please replace with a new button cell. Press the cap and then pull it out to replace a new one.

### 3. Compatibility:

**Wireless Charging Pad for:**  
iphone X/8/8plus,Samsung Galaxy Note 8,S8/S8 Plus,S7/S7 Edge,S6 Edge Plus, Note 5 and other Qi enabled devices.

**NOTE:** If your device dose not support Qi-Standards, you need to buy additional wireless receiver to use FREEDOM 4A.

To ensure fast charge 10W wireless output it's necessary to use a QC3.0 power adapter.

### 4. Attention:

1. Do not use your alarm clock wireless charger near water. Clean using a soft cloth or paper towel.
2. Do not place your alarm clock wireless charger on any wet surfaces.
3. Do not allow children or the infirm to play with your alarm clock wireless charger without adult supervision.
4. Do not expose your alarm clock wireless charger to excessive heat, flames or fire.
5. Always press all buttons or switches carefully. Do not manhandle your alarm clock wireless charger.
6. Do not use in extremely dry environments, as this can lead to static discharge during usage.
7. Do not expose your alarm clock wireless charger to temperatures above 45°C or below 0°C. Keep out of direct sunlight.
8. Do not attempt to repair this product yourself.
9. Do not drop, puncture or expose your alarm clock wireless charger to excessive trauma.
10. Unplug your alarm clock wireless charger during lightning storms.

11. Keep the distance between the implanted medical device (cardiac pacemaker, implantable cochlea, etc.) and the alarm clock wireless charger >20CM to avoid potential interference with the medical device.

**NOTE:** The pictures in the manual are schematic drawings, and the final product is subject to the actual product.

### IMPORTANT SAFETY INSTRUCTIONS

When used in the directed manner, this unit has been designed and manufactured to ensure your personal safety. However, improper use can result in potential electrical shock or fire hazards. Please read all safety and operating instructions carefully before installation and use, and keep these instructions handy for future reference. Take special note of all warnings listed in these instructions and on the unit.

1. Water and Moisture – The unit should not be used near water. For example: near a bathtub, washbowl, kitchen sink, laundry tub, swimming pool or in a wet basement.
2. Ventilation – The unit should be situated so that its location or position does not interfere with its proper ventilation. For example, it should not be situated on a bed, sofa, rug or similar surface that may block ventilation openings. Also, it should not be placed in a built-in installation, such as a bookcase or cabinet, which may impede the flow of air through the ventilation openings.
3. Heat – The unit should be situated away from heat sources such as radiators, heat registers, stoves or other appliances (including amplifiers) that produce heat.
4. Power Sources – The unit should be connected to a power supply only of the type described in the operating instructions or as marked on the appliance.
5. Power-Cable Protection – Power supply cables should be routed so that they are not likely to be walked on or pinched by items placed upon or against them. It is always best to have a clear area from where the cable exits the unit to where it is plugged into an AC socket.
6. Cleaning – The unit should be cleaned only using a warm damp cloth. Do not use solvents, etc.
7. Objects and Liquid Entry – Care should be taken so that objects do not fall and liquids are not spilled into any openings or vents located on the product.
8. Attachments – Do not use attachments not recommended by the product manufacturer.

9. Overloading – Do not overload wall sockets, extension cords, or integral convenience receptacles as this can result in a risk of fire or electric shock.

10. Damage Requiring Service – The unit should be serviced by qualified service personnel when:

A. the power supply cable or plug has been damaged.

B. objects have fallen into or liquid has been spilled into the enclosure. C. the unit has been exposed to rain.

D. the unit has been dropped or the enclosure damaged.

E. the unit exhibits a marked change in performance or does not operate normally.

12. Periods of Nonuse – If the unit is to be left unused for an extended period of time, such as a month

or longer, the power cable should be unplugged from the unit to prevent damage or corrosion.

13. Servicing – The user should not attempt to service the unit beyond those methods described in the user's operating instructions. Service methods not covered in the operating instructions should be referred to qualified service personnel.

**NOTE:** Any damage caused by physical impact, Water/Liquid, fire etc caused by customer or nature shall not be covered under warranty. Only product design, feature and functionality related faults will be considered.

#### www.portronics.com

**For Support**  
Visit : [www.portronics.com/support](http://www.portronics.com/support)  
Email: [supportcenter@portronics.com](mailto:supportcenter@portronics.com)  
Contact No. : +91 955245245 , 011-42413131  
(Working Hrs. : Monday - Saturday 10:00am - 6:00pm)



#### E-waste Management

Email - [info@3recycler.com](mailto:info@3recycler.com)

For E-waste & ROHS compliance refer to <http://www.portronics.com/ewaste.html>