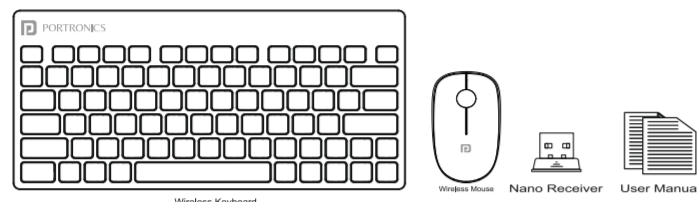


Introduction

Thank you for choosing Key2 Combo, wireless keyboard & mouse. This manual will help you to understand the operation of the keyboard. It is better to familiarize yourself with the other devices before you use. Please read the manual carefully, and keep it for future references.

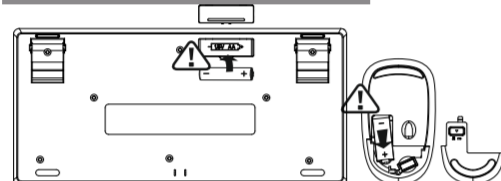
Product & Package Content



System Requirement

Windows: 2000/ ME/ XP(x64)
/ Vista / 7/ 8 /10
Mac OS X(More than V10.4)
Workable USB port

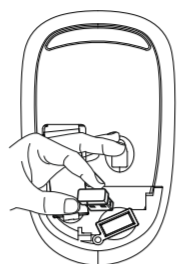
How to Use



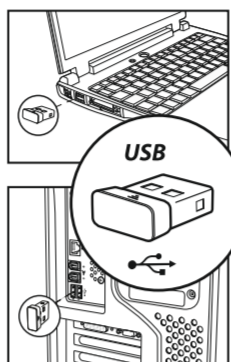
Step 1. Open the battery case & insert the battery
(Pay attention to the Negative and Positive positioning.)

Note: Before use, please tear up the battery insulating protective film.

Step 2. Remove the receiver from the mouse.



Step 3. Insert the receiver into the USB port of your computer/laptop.



Step 4. Enjoy the wireless communication.

PRODUCT FEATURES:

Stable Wireless Transmission

2.4Ghz wireless technology can provide a reliable connection and not subject to any interference in the 360 degrees within 30 meters.

The Ultra Smooth Chocolate Keypads

Chocolate keypad increase the area of contact, feel more comfortable & more accurate with soundless experience.

Quick Multimedia Buttons

Press Fn key to archive a quick play/pause, volume control and other fast operation functions.

Five Times More Power Saving Than Ordinary Devices

The industry's top chip gives you five times more power saving than ordinary devices. The standby time is up to 36 months.

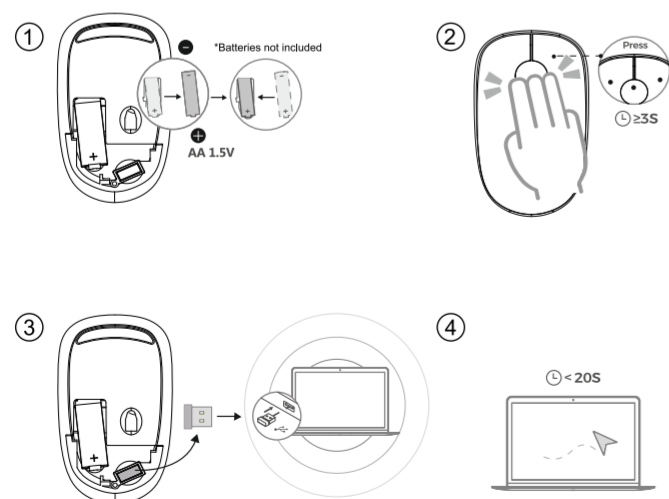
Silent Button Design

The silent micro switch design, produce sounds can be reduced about 95% than the other mouse, the service life can reach more than 3000000 times.

Troubleshooting

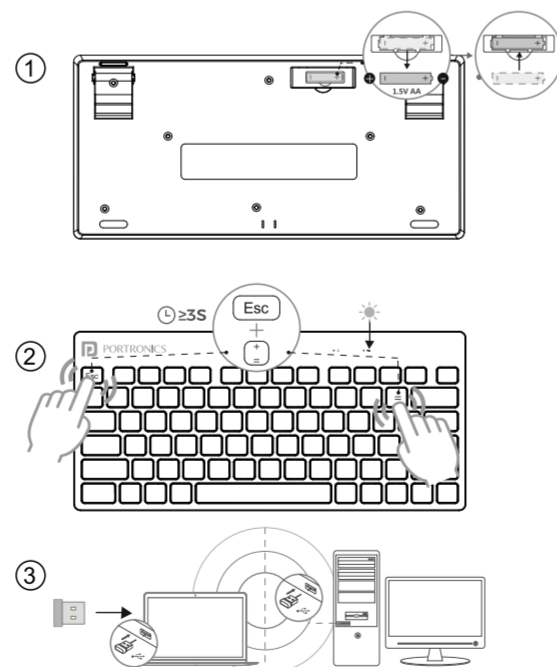
Mouse Not Working:

1. Re-insert the batteries and check, if those were correctly inserted.
2. Simultaneously press the right button, centre scroll wheel, and left button over 3 seconds to enter Pairing Mode.
3. Re-plug the USB Receiver.
4. Once successfully paired, move the mouse within 20 seconds to check if it is working fine.
5. If it is still not working, please repeat all the steps.



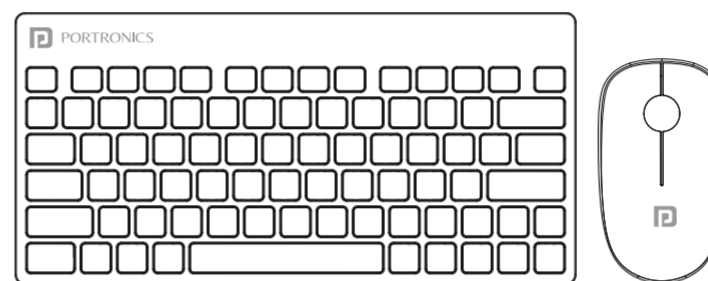
Keyboard Not Working:

1. Re-insert the batteries and check, if those were correctly inserted.
2. Simultaneously press the 'Esc' key and '='/ '+' key, to enter Pairing mode. The rightmost indicator will stay On.
3. Re-plug the USB Receiver.
4. Make sure the Keyboard is kept close to the USB Receiver, and wait till the indicator light goes off. Then, you can start using your device.
5. If it is still not working, please repeat all the steps.



KEY2 COMBO

Multimedia Wireless Keyboard & Mouse



USER MANUAL

PRODUCT SPECIFICATIONS:

Mouse Specifications

Data Transmission	: 2Mbps
Frequency	: 2402.85MHz - 2480.85MHz
Resolution	: 1500DPI
Rate of Return	: 250Hz
Channel	: 16
Engine	: No light
Distance	: 30m
Voltage	: 1.5V
Working Current	: 11mA
Standby Current	: 1.3mA
Mouse Key Life	: Above 3 Millions
Mouse Size	: 113 X 64 X 32mm

Keyboard Specifications

Data Transmission	: 2Mbps
Frequency	: 2402.85MHz - 2480.85MHz
Channel	: 16
Distance	: 15m
Voltage	: 1.5V
Working Current	: 1.5mA
Standby Current	: 6uA
Keyboard Key Life	: Above 10 Millions
Keyboard Size	: 289 X 140 X 26.5mm

www.portronics.com

For Support

Visit : www.portronics.com/support
Email: help@portronics.com
Contact No. : +91 9555245245 , 011-42413131
(Working Hrs. : Monday - Saturday 10:00am - 6:00pm)



E-waste Management

Email - info@3rrecycler.com
For E-waste & ROHS compliance refer to
<http://www.portronics.com/ewaste.html>

WARNING/DISPOSAL OF UNIT

If the battery has permanently died and you do not want to replace your battery, you should follow the disposal instructions below:

Never dispose of used batteries/electronics with ordinary solid wastes, since they contain toxic substances.

Always dispose of used batteries/electronics in accordance with the prevailing regulations that apply to the disposal of batteries/electronics. If there are no local regulations concerning battery/electronics disposal,

Please dispose of the device in the specific electronic waste bin.

CAUTION

The battery used in this device may present a risk of fire, explosion or chemical burn if mistreated

Never use or charge the battery if it appears to be leaking, discolored, deformed, or in any way abnormal.

Never disassemble the unit or attempt to remove battery as that could cause leakage of alkaline solution or other electrolytic substance.

Always confirm that the temperature is 5°C - 50°C before you charge the battery.

Leakage or deterioration of the battery may occur if this warning is not heeded.

Never expose the battery to any liquid.

Never expose the battery to excessive heat such as direct sunlight or fire. Never use the battery pack in an unventilated vehicle where excessive internal temperatures may be encountered.

Always keep the battery out of the reach of infants and small children.

IMPORTANT SAFETY INSTRUCTIONS

When used in the directed manner, this unit has been designed and manufactured to ensure your personal safety. However, improper use can result in potential electrical shock or fire hazards. Please read all safety and operating instructions carefully before installation and use, and keep these instructions handy for future reference. Take special note of all warnings listed in these instructions and on the unit.

1. Water and Moisture - The unit should not be used near water. For example: near a bathtub, washbowl, kitchen sink, laundry tub, swimming pool or in a wet basement.
2. Ventilation - The unit should be situated so that its location or position does not interfere with its proper ventilation. For example, it should not be situated on a bed, sofa, rug or similar surface that may block ventilation openings. Also, it should not be placed in a built-in

installation, such as a bookcase or cabinet, which may impede the flow of air through the ventilation openings.

3. Heat - The unit should be situated away from heat sources such as radiators, heat registers, stoves or other appliances (including amplifiers) that produce heat.

4. Power Sources - The unit should be connected to a power supply only of the type described in the operating instructions or as marked on the appliance.

5. Power-Cable Protection - Power supply cables should be routed so that they are not likely to be walked on or pinched by items placed upon or against them. It is always best to have a clear area from where the cable exits the unit to where it is plugged into an AC socket.

6. Cleaning - The unit should be cleaned only using a warm damp cloth. Do not use solvents, etc.

7. Objects and Liquid Entry - Care should be taken so that objects do not fall and liquids are not spilled into any openings or vents located on the product.

8. Attachments - Do not use attachments not recommended by the product manufacturer.

9. Overloading - Do not overload wall sockets, extension cords, or integral convenience receptacles as this can result in a risk of fire or electric shock.

10. Damage Requiring Service - The unit should be serviced by qualified service personnel when:

A. The power supply cable or plug has been damaged.

B. Objects have fallen into or liquid has been spilled into the enclosure. C. the unit has been exposed to rain.

D. The unit has been dropped or the enclosure damaged.

E. The unit exhibits a marked change in performance or does not operate normally.

12. Periods of Nonuse - If the unit is to be left unused for an extended period of time, such as a month or longer, the power cable should be unplugged from the unit to prevent damage or corrosion.

13. Servicing - The user should not attempt to service the unit beyond those methods described in the user's operating instructions. Service methods not covered in the operating instructions should be referred to qualified service personnel.