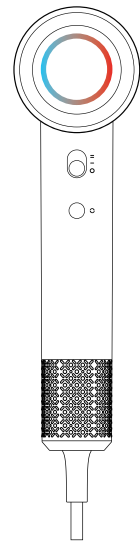


# Zifro



Please read the instructions carefully before use, and keep it properly for future reference.

### Important hint

Please read this manual and all instructions and warnings on the product before using this product. When using electrical appliances, you should always follow basic precautions, including the following:

1. Appliances, filters, and accessories contain magnets. Keep away from strong magnetic fields such as implanted medical devices such as pacemakers and defibrillators that may affect them. Credit cards and electronic storage media may also be affected.

2. All warnings involved in this manual apply to this product and all electrical appliances, as well as all tools, accessories, chargers, or power adapters. Use this to avoid the risk of fire, electric shock, or injury.

### Important safety instructions

This product cannot be used by persons with physical, sensory, or intellectual disabilities, and persons without relevant experience and knowledge (including children) unless supervised or instructed by a guardian to ensure that they can use this product safely. Those involved in their use are required to use electrical appliances safely and to be aware of the associated hazards and the correct way of cleaning and using the product.

This product is not allowed to be used as a toy. If children use or use near children, children should be supervised to avoid unnecessary safety accidents.

This symbol indicates the following warning: Do not use this appliance near a bath, shower, washbasin, or other utensils filled with water.



1. Do not use it if the power cord or plug is damaged.

### 2. This product contains a thermal safety cut-off device to prevent overheating. If the product cuts off power due to overheating, unplug it from the electrical outlet and allow it to cool down.

3. Note: To avoid danger caused by the false reset of the thermal circuit breaker, the appliance should not be powered by an external switching device, such as a timer, or connected to a circuit that is regularly turned on and off by a general-purpose component. The appliance should not be plugged into any outlet where the power supply is unstable or may be switched off.

4. When this product is used in the bathroom, the plug needs to be unplugged after use. Because after the switch of this product is turned off, it is still dangerous to approach the water. For added protection, it is recommended to install a residual current device (RCD) with a rated residual operating current not exceeding 30mA in the electrical circuit supplying the bathroom.

5. Do not use this product for any purpose other than dry hair.

6. Do not touch the plug or any part of the product with wet hands.

7. Do not pull the power cord when unplugging the power supply. To pull out the plug, please keep your hands dry and grasp the plug instead of the power cord. Do not use extension cords.

8. It is strictly forbidden to clean the filter screen with water or other conductive liquids, and do not squeeze the filter screen excessively.

9. Do not stretch or stress the power cord. Keep the power cord away from heated surfaces and do not wrap the cord around the appliance, and never wrap the power cord around the product.

10. Do not use any lubricants, cleaners, polishes, air fresheners, natural gas, and other flammable and explosive gases near this product.

11. Do not disassemble the device by yourself. Improper reassembly may cause electric shock or fire.

12. If the product does not operate according to its design, or if the product has been violently impacted, dropped from a height, damaged, water ingress, etc, please do not use it.

13. Professionals should unplug the power plug before repairing, cleaning, and maintaining the product. Please unplug the power plug before cleaning the filter and proceed accurately.

### 14. Please hold the handle of the machine to operate.

15. Before the product is connected to electricity, please check whether the voltage indicated on the device matches the local voltage.

16. When the power cord or plug is damaged or overheated, please do not use it to avoid short circuits and causing a fire.

17. After use, please turn off the power switch and unplug the power cord.

18. Do not block the air inlet.

19. The device will automatically shut down when it overheats. At this point, unplug it and let it cool down for a few minutes. Before switching on the device again, make sure that the grille vents are not blocked by lint hair, etc.

20. Do not direct airflow toward the eyes or other sensitive parts.

21. Do not soak this product in water.

22. Do not use this product while bathing or showering. This product must be placed out of reach when bathing or showering.

23. Check whether there is any obvious damage before using this product, and do not use it if it is damaged.

24. In case of abnormality and failure, please stop using it immediately and unplug the power plug.

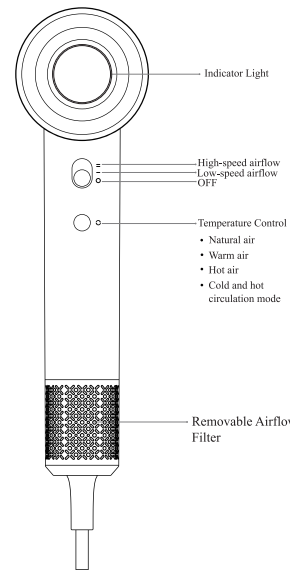
25. Always turn off your device and put it down when you are not using it, even if only for a moment.

### Notice:



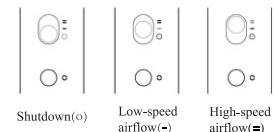
During use and for some time after use, the temperature of the device's air outlet, metal ring, accessories, and red-shaded areas may be high. Please allow it to cool down before proceeding.

### Function description

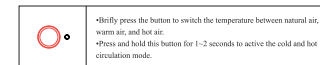


### Gear function

Switch/Airflow speed setting  
 •Slider the switch up or down to quickly switch between two airflow speeds.  
 •Please make sure that the switch is in the OFF position before connecting the power plug.



### Temperature control



### Indicator light description

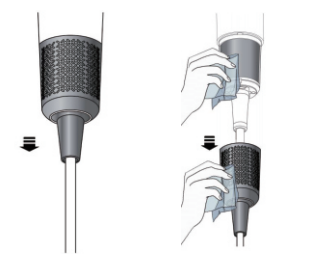
Natural air		Constant blue light
Warm air		Constant orange light
Hot air		Constant red light
Cold and hot circulation mode		Flashing blue and red light

### Product parameters

Product name	Product size	Rated power	Rated voltage	Rated frequency
Zifro	73*89*258mm	1600W	AC220V-240V	50Hz/60Hz

### Cleaning and Maintenance

•Please clean the filter regularly to prevent debris from building up and ensure a smooth air flow. Please do not clean the filter screen with water, and do not knock the filter screen with a stick, otherwise, it may cause failure.  
 •Please ensure that the hair dryer is powered off and the plug has been removed from the power outlet before cleaning the filter.



Grasp the handle and filter cover, and gently slide the filter cover down.  
 Use a lint-free or soft cloth to remove any dust or debris that has accumulated on the filter screen.



Use a soft brush to remove any build up on the filter screen. Dust or debris on the surface.  
 After cleaning, align the dust cover up slightly to fix it magnetically.

[www.portronics.com](http://www.portronics.com)

For Support

Visit : [www.portronics.com](http://www.portronics.com)

Email : [help@portronics.com](mailto:help@portronics.com)

Contact No. : +91 9555245245

(Working Hours : Monday – Saturday, 10:00am – 6:00pm)



E-Waste Management

E: [info@3rrecycler.com](mailto:info@3rrecycler.com)

For E-Waste & ROHS compliance refer to [www.portronics.com/ewaste](http://www.portronics.com/ewaste)